



Unique Glass Colors Artisan Colors

Available in 1 ounce jars and Pints

We at UGC do love our bubbles!

The Original Colors transparents bubble nicely when fused between two layers of glass (unless you want them to fire out) but.....they contain lead so cannot be used in all situations.

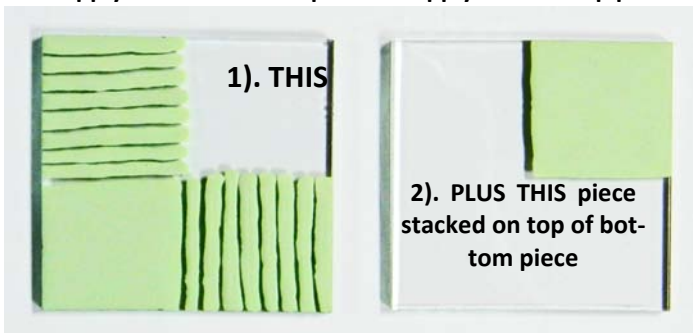
If you add our Bubble Powder to our NT line of color, a non-lead color-line, that is semi-opaque and fuse it between layers of glass you get nice bubbles and great color and they can be used in any situation but they are not transparent.

So, we came up with a brand new kiln fired color line called: the Artisan line - a non-lead color line. These were designed to be fused between layers of glass, for transparency/translucency and of course - BUBBLES. (by using specific placement techniques, you can actually "control" your unruly bubbles!) The Artisan line can be used on top also, however, they usually look quite different from what they look like in between glass. On top, they have their own characteristics: some fused textured, some have a muted look, some are transparent/translucent or opaque. Some of these effects are technique dependent. Start with a mix of 1:1 with Glass Medium. Note: Consistency can be changed by adding more or less Glass Medium so experiment with your applications! Sienna and Solar Flare need to be mixed a bit thicker to achieve richer color. Solar Flare can also, sometimes, have a reddish glow.

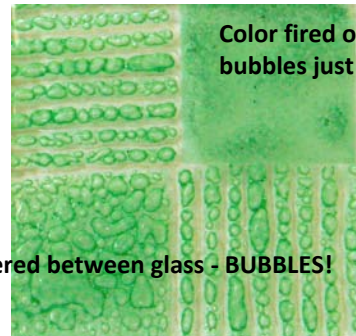
Be sure and shake the color in the jar BEFORE mixing with Glass Medium. Small gritty stuff is okay, if you don't want intense color from the grit, pick it off the wet color application.

Apply color to bottom piece

Apply color to top piece



FUSED TOGETHER
IN KILN



**EQUALS
THIS**

602 Green. This is the bottom piece of glass. For the lines in the two squares mix the color with Glass Medium a bit thicker than melted ice cream so it does not flow so easily and then just be sure to leave a small space where the color does not touch itself. The bottom left square is applied all over with the color at our normal melted ice cream consistency. The top left square is left blank here so the top application can be seen better after firing.

This is the top piece of glass with the color applied at the melted ice



Left has color on top, right color

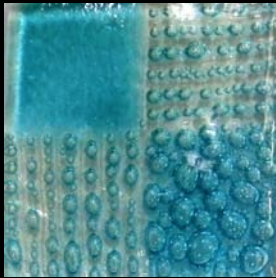
After firing at 1500F. The lines are all distinct, the bottom left has all over bubbles and the top right has a darker, pebbly look.



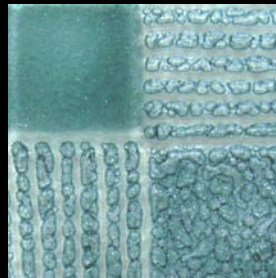
UGC Logo in all Artisan Colors

Unique Glass Colors

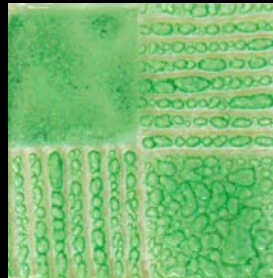
Artisan Colors



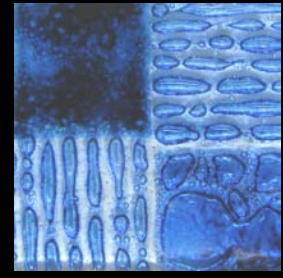
600 Azure



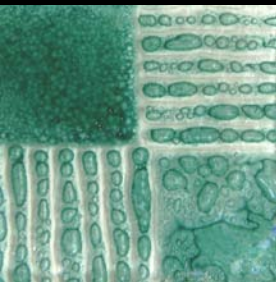
601 Glacier



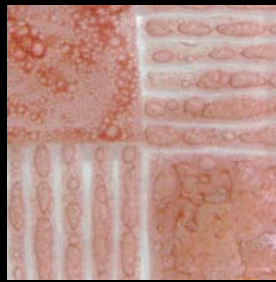
602 Green



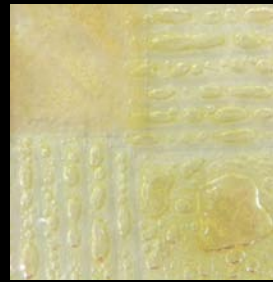
603 Royal Blue



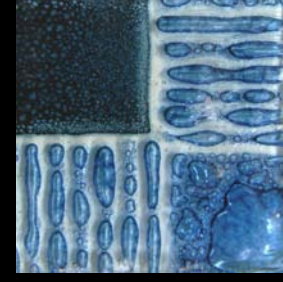
604 Teal Green



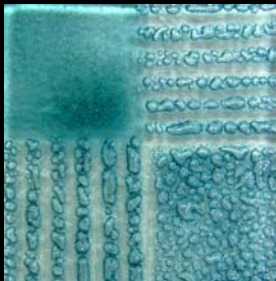
605 Sienna



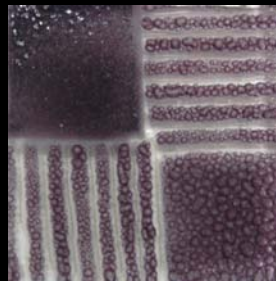
606 Solar Flare



607 Mystic Blue



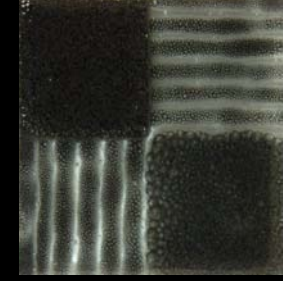
608 Teal Blue



609 Wine



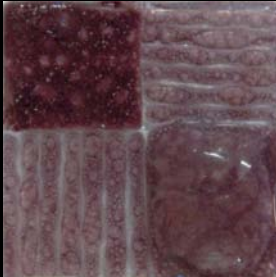
610 Deep Pink



611 Charcoal



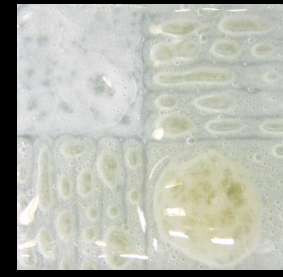
612 Melon



613 Plum



614 YellowOrange



615 White Glo

300 Ryder Lane Unite 1000 Casselberry, Fl 32707
407.261.0900 Fax: 407.331.0900
uniqueglasscolors.com info@uniqueglasscolors.com